

ANZAC RIFLE RANGE SAFETY RULES

Range User Edition

Last modified: 7th September 2006
Adopted: 7th September 2006

Revision History:

2006-08-23:	GB,	Final Draft for approval at September 2006 RUC meeting.
2006-08-23:	GB,	Added revisions from July 2006 RUC meeting.
2006-07-03:	GB,	Added revisions from April 2006 RUC meeting & other submissions.
2006-09-07:	GB,	Revision to 4.8(e),(f) to reflect zero range construction on C9/C10.
2006-09-07:	GB,	Addition of 9.3 to mention Clause 132 (Offence of trespass on shooting range) in NSW Firearms Regulation 2006.
2006-09-07:	RUC,	Removed reference to 'front and rear' in 4.8(a).

1 LOCATION AND DESCRIPTION

1.1 General

The ANZAC Rifle Range, Malabar, is located on Commonwealth land on the coastline, south of the city of Sydney, New South Wales. The Range consists of three main categories, as marked on Appendix A.

- (a) Block 1 – six rifle and/or pistol ranges;
- (b) Block 2 – a Heritage Area containing disused defence installations and important remnants of native coastal vegetation; and
- (c) Block 4 – a Heritage Area containing important remnants of native coastal vegetation.

1.2 Range Users

The Range Users are:

- (a) Drummoyne RSL Pistol Club;
- (b) Frank Leek and Gail Leek (trading as Malabar Riding School);
- (c) New South Wales Rifle Association Inc.;
- (d) New South Wales Smallbore and Air Rifle Association;
- (e) Sporting Shooters Association of Australia (New South Wales) Inc.;
- (f) Sydney Model Aero Club Inc.;
- (g) any other person the Owner permits to use the Range on a regular basis.

1.3 Description of Range

The following shooting ranges are on the land:

- (a) Fullbore Classification Range equipped with 70 counter-balanced target frames, with a range danger area template enabling use to 800 metres or 900 yards.
- (b) Service Classification Range equipped with 40 counter-balanced target frames with a range danger area template enabling use to 600 yards.
- (c) 25m Zero Ranges located behind the target shed between G & H blocks.
- (d) 100m Horseshoe Ranges located parallel to the Service Classification Range.
- (e) 50m Smallbore and Air Rifle Complex located on the escarpment, near the 800 metre access road.

- (f) Short Range Benchrest Facility located on the southern side of the Service Classification Range.

1.4 Relationship with User's Safety Rules

These rules prevail where there is any inconsistency between a Range Users Safety Rules and these rules.

2. ACCESS

2.1 Range Access

- (a) The Range can be accessed from Franklin Street, Malabar. Range gates are:
 - (i) opened at approximately 0630 hrs; and
 - (ii) locked at approximately 2000 hrs, preventing vehicular access to any part of the Range.
- (b) The Range may only be accessed outside the hours specified in rule 2.1(a) with the prior agreement of the Caretaker.

2.2 Reporting in

- (a) Every person entering the Range must sign a register of range attendance provided by the Range User organisation they are a member or visitor of.
- (b) Each Range User organisation must sign the register at the Manager's office at the conclusion of their activities each day.
- (c) Rule 2.2(a) does not apply to:
 - (i) The Malabar Riding School; or
 - (ii) New South Wales Smallbore and Air Rifle Association.

2.3 Production of Shooting Licence

- (a) A person who enters the range for shooting activities must produce their licence or permit issued under the Firearms Act 1996 (NSW) when requested to do so by the Manager or the Range User organisation they are a member of.
- (b) If a person fails to comply with rule 2.3(a) that person:
 - (i) must not shoot on the Range; and
 - (ii) must immediately leave the Range if requested by the Manager or the Range User organisation they are a member of.

2.4 Range Use

- (a) Range Users may use the ranges only during:

- (i) the Licensed Time allocated to the Range User in the Shooting Program and
 - (ii) any other time allocated to the Range User by the Manager
- (b) This rule does not apply to the use of the 50m Smallbore and Air Rifle Complex by the New South Wales Smallbore and Air Rifle Association.

2.5 Allocation of use by the Manager

- (a) A Range User may apply to the Manager to use a range which:
- (i) has not been allocated to a Range User in the Shooting Program; or
 - (ii) is otherwise available for use.
- (b) The Manager may allocate the time applied for to the Range User if no range danger area template is infringed.

2.6 Casual use of Range by Police/Government Agencies

The Manager may also allocate unallocated time for use of a range by the Police or Government Agencies, if no range danger area template is infringed.

2.7 Unauthorised use

Any person who enters the Range and commences firing without booking and/or obtaining clearance from the Manager is a trespasser and the Police may be notified.

2.8 Heritage Area

- (a) Range Users must not enter the Heritage Area without the prior written consent of the Manager on each occasion.
- (b) This rule does not apply to:
- (i) the Caretaker in the exercise of his caretaking duties; or
 - (ii) Malabar Riding School using the Approved Route through the Heritage Area.

2.9 Range Operating Hours

Except where otherwise authorised, Range Users must not commence activities on a range before 0830 hours nor continue to use a range after 1730 hrs.

This rule does not apply to the Malabar Riding School's:

- (a) use of the Riding School Horseyards; or
- (b) use of the Range for grazing by horses outside the hours referred to in rule 2.9(a).

Shooting activities must not commence prior to midday on ANZAC Day (25th April).

3 GENERAL USE RULES

3.1 General co-ordination

The Manager acts as the central authority for regulating the use of the Range.

3.2 Directions of the Manager or Caretaker

Each person on the range must comply with the reasonable directions of the Manager or Caretaker in relation to these rules.

3.3 Notification of incidents

A Range User must notify:

- (a) the Manager immediately once it becomes aware that there is a dangerous or potentially dangerous situation on the Range; and
- (b) the Caretaker in the event of an emergency.

3.4 Authority to temporarily close ranges

- (a) The Manager may close any Shooting Range without notice where an unexpected need to access part of a Range Danger Area arises.
- (b) The Manager must promptly place a sign on any Shooting Range that is closed stating the range is closed, or that all ranges are closed.
- (c) The closing of a Shooting Range by the Manager under this rule 3.4 supercedes any range bookings in force.

3.5 Speed limits

The following speed limits apply on the Range:

- (a) from the front gates of the Service Classification Range – 20km/h; and
- (b) all other parts of the Range – 25km/h.

3.6 Parking

- (a) Vehicles may be parked:
 - (i) in parking areas designated by the Manager throughout the Range complex; or
 - (ii) 20 metres behind the firing points.
- (b) Cars and motorcycles must not be parked on, or driven over, any mound in any circumstances

- (c) A Range User may prohibit vehicles being driven onto a range during a competition by that Range User on the range, or may proscribe a distance greater than 20 metres for the parking of vehicles behind a firing point.

3.7 Personal and club property

The Commonwealth does not accept responsibility for loss of property within the Range, including any personal property.

3.8 No alcohol or drugs

A person must not:

- (a) handle or use a firearm;
- (b) work as a Range Officer, Butts Officer, Safety Officer, Scorer or Check Scorer;
- (c) be in the markers gallery;
- (d) operate a model aircraft; or
- (e) ride a horse,

whilst under the influence of alcohol or any other drug.

3.9 Rubbish

Rubbish must be:

- (a) placed in the bins provided; or
- (b) removed from the range at the completion of a shoot or flying as the case may be by the respective Range User.

3.10 First Aid Kit

A Range User must have a first aid kit that is easily accessible when a range is being used.

3.11 Horseriding Restrictions

To avoid damage to groomed areas of the firearms range, horses are not permitted to be ridden:

- (a) across firing points
- (b) between firearms range marker pegs in a 'slalom' fashion.

4. OPERATING INSTRUCTIONS – FIREARMS RANGES

4.1 Line of Fire

- (a) Except where permitted by a range danger area template approved by NSW Police, all Shooting Ranges must involve a line of fire perpendicular to the stop butt.
- (b) The line of fire on the 50m Smallbore and Air Rifle Complex is broadly to the south west.
- (c) The line of fire on all other ranges is broadly to the east south east.
- (d) The lines of fire for all ranges are graphically illustrated in Appendix A.

4.2 Fullbore Classification Range

- (a) The Fullbore Classification Range may be used at firing points established from 100 to 800 metres, and at 900 yards. All range positions, excluding 900 yards, should have target number pegs to indicate the correct target for use, and shooters should ensure that this correct line of fire is used.
- (b) Before commencing shooting, range users should ensure that a red danger flag is being flown on the northern extreme of the stop butt, and at the centre of the stop butt above the eastern end of the centre service road.
- (c) A red danger flag shall be flown on either the mound and/or at a flag pole immediately behind the mound in use to indicate that live firing is in progress. When concurrent range use is in progress, a danger flag shall be flown on each mound.
- (d) When shooting from 800 metres or 900 yards, the roadway gate adjacent to the caravan park shall be closed. Additional flags should be flown at mid-distance flag poles to warn that long range firing is in progress.
- (e) Range Users must ensure that the 25 metre Zero Ranges are vacated prior to firing on targets right of EX (Echo Ten), or prior to firing at distances greater than 300 metres.
- (f) Except where otherwise authorised by a Range Approval, all rounds must be loaded singly and magazine fire is prohibited.
- (g) No competitor shall fire at a hand-held value disc.

4.3 Service Classification Range

- (a) The Service Classification Range may be used at firing points established at 100, 200 and 300 metres, with limited activities at 400 metres, 500 metres and 600 yards. All range positions at 100, 200 and 300 metres should have target number pegs to indicate the correct target for use, and shooters should ensure that this correct line of fire is used.
- (b) Before commencing shooting, range users should ensure that a red danger flag is flown on the southern extreme of the stop butt, and at the centre of the stop butt above the eastern end of the centre service road.

- (c) A red danger flag shall be flown on either the mound and/or at a flag pole immediately behind the mound in use to indicate that live firing is in progress. When concurrent range use is being conducted, a danger flag shall be flown on each mound.
- (d) When shooting at ranges greater than (but not including) 300 metres, the following range entrances shall be closed, have barricades erected and have appropriate warning signs indicating that live firing is in progress, subject to the range danger area template in use (applied from the westernmost shooting position on the Service Classification Range):
 - (i) 300m northern entry road gate adjacent to the 100 metre Horseshoe Ranges;
 - (ii) 300m southern entry road gate at the Short Range Benchrest Facility;
 - (iii) 400m northern entry trail;
 - (iv) East & south-eastern entry trails into the Short Range Benchrest Facility;
 - (v) 100 metre Horseshoe ranges chain gate;
- (e) Prior to shooting activities being conducted pursuant to Rule 4.3(d) and if dictated by the range danger area template in use, Range Users shall ensure that the Short Range Benchrest Facility, 100 metre Horseshoe Ranges and 25 metre Zero Ranges are vacated.

4.4 25 metre Zeroing Ranges

- (a) The 25 metre Zeroing Ranges shall not be used, and shall be vacated, when:
 - (i) shooting is being conducted on the Fullbore Classification Range at distances greater than 300 metres;
 - (ii) shooting is being conducted on the Fullbore Classification Range at 300 metres on targets right of F1 (Foxtrot 1);
 - (iii) shooting is being conducted on the Service Classification Range at distances greater than 200 metres;
 - (iv) the 100 metre Horseshoe Ranges are in use.
- (b) Before commencing shooting, range users shall ensure that a red flag is being flown on the flagpole adjacent to the range.
- (c) Only soft targets shall be used on the 25 metre Zero Ranges.

4.5 100 metre Horseshoe Ranges

- (a) The 100 metre Horseshoe Ranges shall not be used, and shall be vacated, when shooting is being conducted on the Service Classification Range at distances greater than 300 metres, except where otherwise permitted by the range danger area template in use (applied from the westernmost shooting position on the Service Classification Range).
- (b) Before commencing shooting, range users shall ensure that the 25 metre Zero Ranges have been vacated.
- (c) Before commencing shooting, range users shall ensure that red danger flags are flown on the flagpoles at the north-western range entrance road and the eastern stop butts of the 100m Horseshoe Ranges.
- (d) During pistol shooting activities on the 100 metre horseshoe ranges, hard targets may be used provided any match requiring them is specified on the NSW Police Shooting Range Approval and that any bullet catchers or ricochet shields detailed in advice from the NSW Firearms Registry are in operation.
- (e) Except where otherwise authorised by a Range Approval, only soft targets shall be used on the 100 metre Horseshoe Ranges.

4.6 50 metre Smallbore and Air Rifle Range

[to be completed]

4.7 Short Range Benchrest Facility

- (a) The Short Range Benchrest Facility shall not be used, and shall be vacated, when shooting is being conducted on the Service Classification Range at distances greater than 300 metres, except where otherwise permitted by the range danger area template in use (applied from the westernmost shooting position on the Service Classification Range).
- (b) During centrefire rifle shooting activities on the Short Range Benchrest Facility, only soft targets shall be used.
- (c) During rimfire and air rifle shooting activities on the Short Range Benchrest Facility, hard targets may be used provided any match requiring them is specified on the NSW Police Shooting Range Approval and that any bullet catchers or ricochet shields detailed in advice from the NSW Firearms Registry are in operation
- (d) During shotgun shooting activities on the Short Range Benchrest Facility, soft targets may be used for 'patterning' and frangible hard targets (eg clays) may be used provided any match requiring them is specified on the NSW Police Shooting Range Approval.

4.8 Concurrent Range Use

Concurrent range use is permitted subject to the following conditions:

- (a) The firers furthest from the stop butts are prone or on a bench rest with the rifle supported by rests.

- (b) All range users (including other firers closer to the stop butts) are outside an angle of 200 mils (about 11 degrees), calculated by either:
 - (i) the use of a compass or or similar surveying equipment by a person qualified to do so; or
 - (ii) allowing a minimum separation on the Fullbore or Service Classification Ranges of 10 target positions for the first 100 metres distance between the firers, followed by 8 targets for each 100 metres of additional distance.
- (c) A “Danger” sign and series of barricades, and/or a set of traffic-style cones shall be erected by the firers furthest from the stop butts along the edge of the separation zone so established.
- (d) No vehicles shall be permitted to park so as to obscure visibility of the full range danger area boundary from the mound in use by the firers furthest from the stop butts.
- (e) The firing points at 25m or 100m on targets C9 and CX (Charlie Nine & Ten) on the Fullbore Classification Range may be used concurrently with the firing point at 300m on targets F6 (Foxtrot Six) through GX (Golf Ten).

Note: Shooters at the firing point at 300m on targets F6 through GX are reminded of their obligations under 4.8(c) and (d) whilst the firing points at 25m or 100m on targets C9 and CX are in use. Separation zones are established in 4.8(b)(ii).

- (f) During concurrent range use beyond 300m on the Fullbore Classification Range, the group of firers closest to the stop butts should be located to the right of the firers furthest from the stop butts to enable unhindered vehicle and pedestrian access via the southern access road.
- (g) Radio contact between the groups of firers should be established and maintained on the designated range safety radio channel.
- (h) All firers in attendance shall be advised of the fact that the range is in concurrent use.

Note: Rule 4.8 does not apply to the 50m Smallbore and Air Rifle Range.

5 SAFETY RULES FOR ALL RANGE ACTIVITIES

5.1 Radio contact amongst Range Users

When the range is in use, the primary point of contact on each range and the Manager must have a functioning UHF Radio (0.5W minimum power) set to channel 20 for sharing of urgent safety messages across the range. This channel is not to be used for any other purpose.

5.2 Sunscreen

All persons in attendance are strongly encouraged to wear sunscreen.

5.3 Footwear

All persons in attendance should wear enclosed footwear at all times.

6. SAFETY RULES FOR SHOOTING ACTIVITIES

6.1 Procedures for dealing with the general public

- (a) If a member of the public enters a range danger area whilst shooting activities are in progress, all shooting must cease immediately and all targets are to be lowered (where possible). A Range Officer should then approach the member of the public and politely inform them that they have entered into a Range Danger Area and ask the member of the public to leave the area without argument.
- (b) If the member of the public contravenes an order given by a Range Officer pursuant to Rule 5.1(a), the Range Officer may elect to contact either the Manager or the NSW Police for assistance.

6.2 Firearms and ammunition

Individual members of Range Users are responsible for the safe storage of their firearms and any ammunition. Firearms must not be left unattended on any range.

6.3 General Safety Rules

The following safety rules apply to all shooting activities:

- (a) except when shooting, 'dry shooting', trigger testing or trigger pressing on the firing mound, rifles must have their bolts removed (or, where authorised by their Range User organisation, have a brightly coloured empty chamber indicator inserted into the breech of the rifle).
- (b) rifle muzzles must be pointed in the direction of the target during chambering of a round and whilst a round is chambered;
- (c) Range Officers must watch closely for range danger area intrusions and danger signals given by Butts Officers and/or Safety Officers. Should such an intrusion or danger signal be observed, Range Officers must call 'cease fire' in a loud voice. Scorers and/or Coaches should repeat this call to shooters on the firing line.
- (d) during rifle shooting activities, should a 'cease fire' be called or any interruption to the shooting take place every competitor whose rifle is loaded must unload all ammunition from their rifle with the muzzle pointed towards the stop butt and then remove the bolt (or, where authorised by their Range User organisation, insert a brightly coloured empty chamber indicator into the breech of the rifle).;
- (e) during shotgun shooting activities, should a 'cease fire' be called or any interruption to the shooting take place every competitor whose firearm is loaded must unload all ammunition from their shotgun with the muzzle pointed towards the

stop butt and then break the action or open the action and insert a brightly coloured empty chamber indicator into the breech of the shotgun.

- (f) during pistol shooting activities, should a 'cease fire' be called or any interruption to the shooting take place every competitor whose pistol is loaded must unload all ammunition from their pistol with the muzzle pointed towards the stop butt and await further instructions from the Range Officer (eg to reholster the pistol or place it in a bag once cleared).
- (g) following a 'cease fire' or other interruption to the shooting, competitors must not recommence shooting until and unless authorised by a Range Officer.
- (h) before retiring from the firing mound and/or when directed by the Range Officer, each competitor must unload all ammunition from their firearm with the muzzle pointed towards the stop butt and then remove the bolt (or, where authorised by their Range User organisation, insert a brightly coloured empty chamber indicator into the breech of their firearm). Before retiring from the firing mound, a Range Officer, Safety Officer, Scorer or Check Scorer must confirm that the chamber of the firearm is empty and that no ammunition remains in the firearm.
- (i) in disciplines where it is so required, every competitor is required to see that the trigger of their rifle is so adjusted that it will carry the weight of 1.5kg.
- (j) a competitor must not place his or her firearm on the firing point while anyone is forward of and within the danger area of that firing point.
- (k) no person shall place a live cartridge in the chamber of their firearm for any purpose whatsoever whilst within the boundaries of the range except where permitted to do so both under these rules and under the supervision of a Range Officer.
- (l) any competitor who has a cartridge (fired or unfired) jam in the firearm's chamber will inform the range officer of the fact and with his permission and supervision retire from the firing point with the bolt preferably removed. In the instance of a cartridge being unfired under no circumstances shall any person attempt to remove the cartridge with a cleaning rod or similar object to dislodge the cartridge from the chamber. Precautions should be taken to ensure that the firearm is kept in a safe condition until such time as the cartridge can be competently removed. In the case of a fired cartridge and only after the Range Officer has confirmed the cartridge has been fired shall approval be given for the empty cartridge to be removed using a cleaning rod or similar object.
- (m) No shooting shall take place on any range (including zero ranges) without an accredited Range Officer being in attendance at all times, and having appropriate communication in accordance with Rule 5.1,
- (n) A red danger flag shall be flown immediately inside the gates of the Range to indicate that the area is a live firing range.
- (o) All persons on or near the firing point must wear hearing protection (ie correctly rated ear muffs, ear plugs or both)

- (p) A Range Officer must not simultaneously supervise shooting activities and participate as a shooter.

6.4 Markers Gallery Safety Rules

The following additional safety rules apply to shooting activities that require the use of the markers gallery:

- (a) Markers must obey any safety instructions given by a Butts Officer. The Chief Butts Officer shall have the authority to order from the markers' gallery any person failing to obey instructions.
- (b) All passage in the markers' gallery during a shoot shall preferably be under the parapet or, when necessary, on the roadway as close to the parapet as reasonably possible. Under no circumstances shall any person walk beyond the outward extremity of the bitumen road on the butts of the Fullbore Classification Range during a shoot.
- (c) Clubs shall ensure that new markers, or markers commencing with a Rifle Club for the first time, are introduced to a Butts Officer by a club member.
- (d) Audio/Video equipment, whether or not incorporating headphones, is not permitted to be used in the markers gallery during any shooting activity.
- (e) Bicycles and skateboards shall not be used in the markers gallery at any time.
- (f) All persons in the markers' gallery must wear appropriate footwear. The wearing of thongs shall not be permitted.
- (g) No person under the influence of alcohol or any other drug rendering them incapable of understanding the safety rules shall be permitted in the markers gallery during any shoot.
- (h) Butts Officers and Markers must wear hearing protection (ie correctly rated ear muffs, ear plugs or both) and eye protection whilst in or near the markers gallery.
- (i) Butts officers shall be equipped with a whistle for use in the butts. A series of whistle blasts indicates that all targets are to be lowered immediately.

6.5 Pistol Range Safety Rules

The following additional safety rules apply for pistol shooting activities:

- (a) All persons must wear hearing protection (ie correctly rated ear muffs, ear plugs, or both) and eye protection when in or near the pistol ranges.
- (b) The level of supervision required for each range is one shooter per Range Officer during IPSC (or similar) shooting activities and no more than 10 shooters per Range Officer during static position shooting activities.

7. ENFORCEMENT OF RULES

7.1 Duty of Range Users

Range Users must:

- (a) ensure their members are familiar with these Rules;
- (b) give a copy of these Rules to each member, and
- (c) remind other Range Users of the requirements of these rules where an infraction occurs.

7.2 Breach of Rules by Club Member

If a member of a Range User fails to comply with these rules the Manager or the Range Users Committee may require the Range User to prohibit that person from coming onto the Range.

7.3 Breach of Rules by Range User

If a Range User fails to comply with these rules, that default gives the Commonwealth the right to terminate the Range Users' Licence Agreement.

8. AMENDMENT

8.1 Periodic Review

The Range Users' Committee may periodically review these Rules and may amend the Rules by given written notice of the amendments to the Manager and the Range Users.

8.2 Proposed Amendments

Range Users, or their members or the Manager may send written recommendations to the Range Users Committee for suggested amendments to these rules.

8.3 Amended Rules

Where an amendment is made to these rules, the Manager must distribute copies to the Range Users. Recipients shall ensure that any outdated copies of these rules are destroyed.

9. DICTIONARY

9.1 Definitions

The following definitions apply to these rules:

Approved Route means the horseriding route across the Range notified by the Owner to the Malabar Riding School from time to time.

Butts Officer means a person authorised by a Range User to conduct or supervise target operation / marking activities in the markers gallery.

Chief Butts Officer means a person authorised by a Range User to supervise or co-ordinate the activities of other Butts Officers.

Caretaker means the person appointed by the Owner as the caretaker of the Range.

Heritage Area means the areas marked Block 2 and Block 4 on Appendix A.

Licensed Time means between the hours on the days:

- (a) allocated to the Range User in the Shooting Program; and
- (b) allocated to the Range User by the Manager.

Manager means the person appointed by the Owner for the purpose of managing the Range

Police means the NSW Police.

Range Danger Area means those areas included within the Range Danger Templates specified by the NSW Firearms Registry.

Range means the land in Folio Identifier 1/809094 known as ANZAC Rifle Range off Franklin Street Malabar.

Range Users Committee means the Committee comprising 2 delegates from each Range User, a representative of the Commonwealth and the Manager formed to facilitate the use of the Range

Range Users means the users referred to in Rule 1.2

Register of Range Attendance means the register to be kept by the Manager (or a Range User pursuant to Rule 2.2(b)) to record attendances on the Range

Shooting Program means the shooting program established by the Range Users' Committee

Range Officer means a person authorised by a Range User to conduct or supervise shooting activities.

Shooting Ranges means the shooting ranges referred to in Rule 1.3

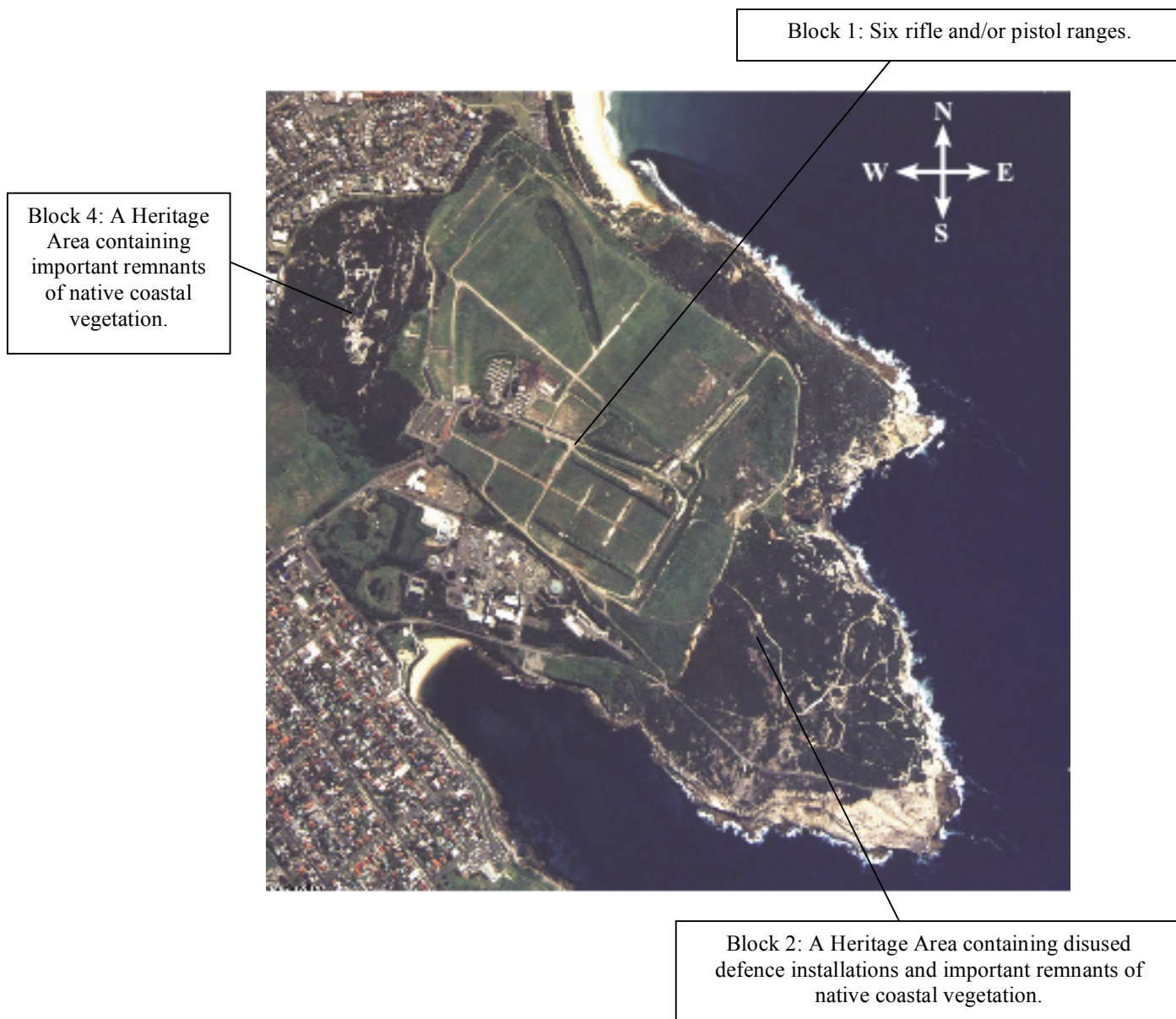
9.2 Relevant Commonwealth Legislation

As the ANZAC Rifle Range is designated prohibited Commonwealth Land, Sections 89 (Trespassing on Commonwealth Land) and 89A (Discharging Firearms on or over Commonwealth Land) of the Commonwealth Crimes Act 1914 apply to the Range.

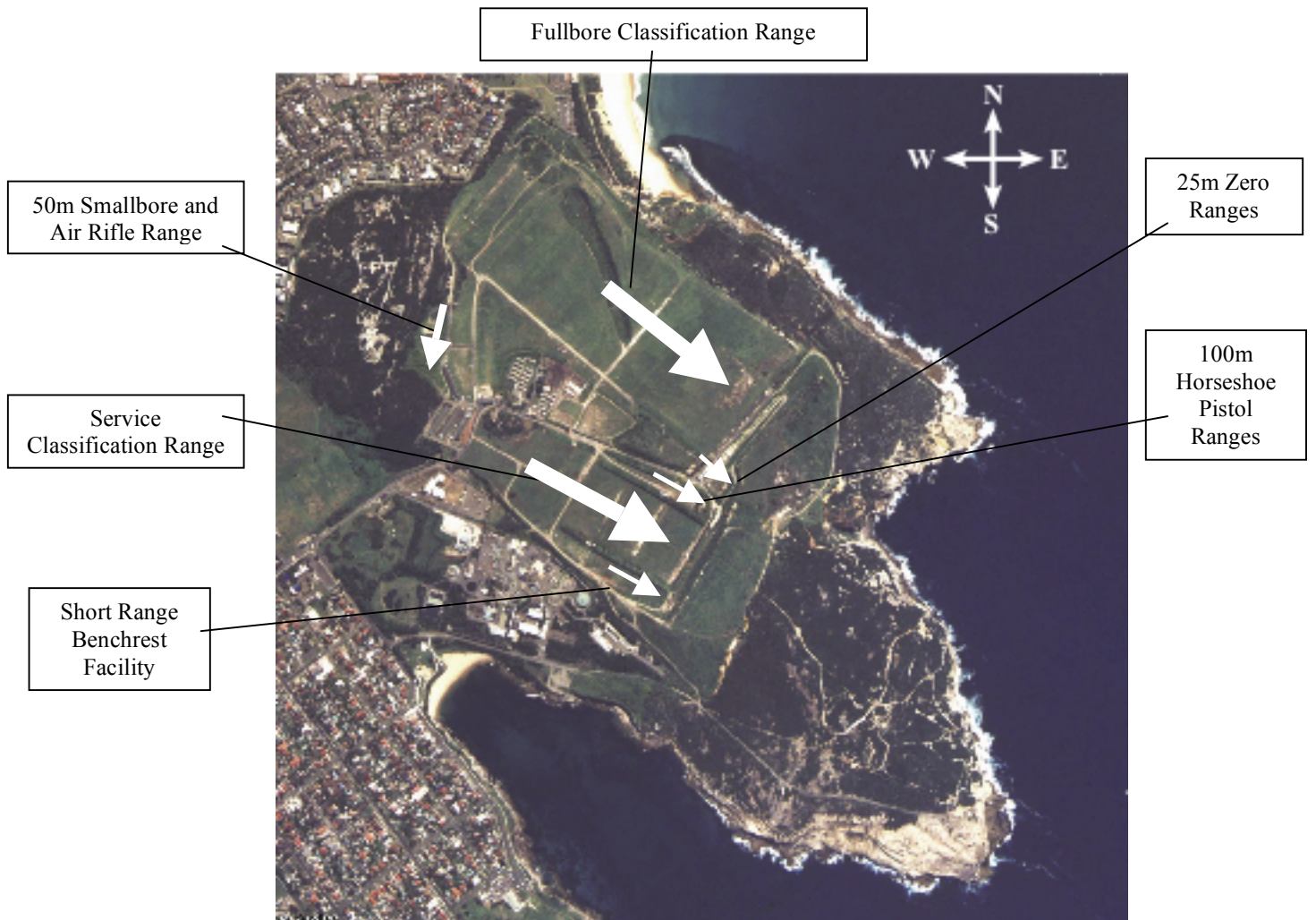
9.3 Relevant NSW Legislation

As the ANZAC Rifle Range is an approved shooting range, Clause 132 (Offence of trespassing on a shooting range) of the NSW Firearms Regulation 2006 applies to the Range.

Appendix A: Range Block Diagram



Appendix B: General Lines of Fire



Note: Thick white lines with arrowheads indicate lines of fire on each respective range.